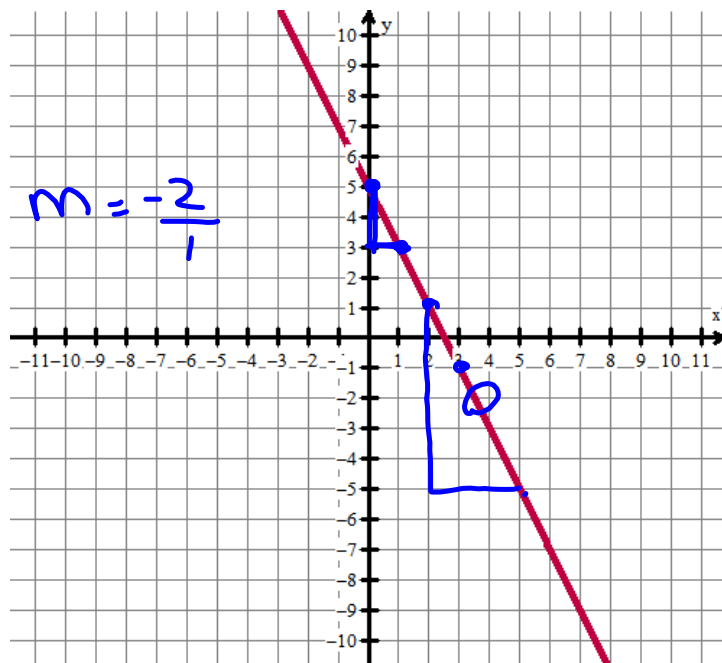


* Trouver l'équation étant donné la ligne:

ex. 1.



$$m \rightarrow -$$

$$y = mx + b$$

$$b = 5$$

$$y = -2x + 5$$

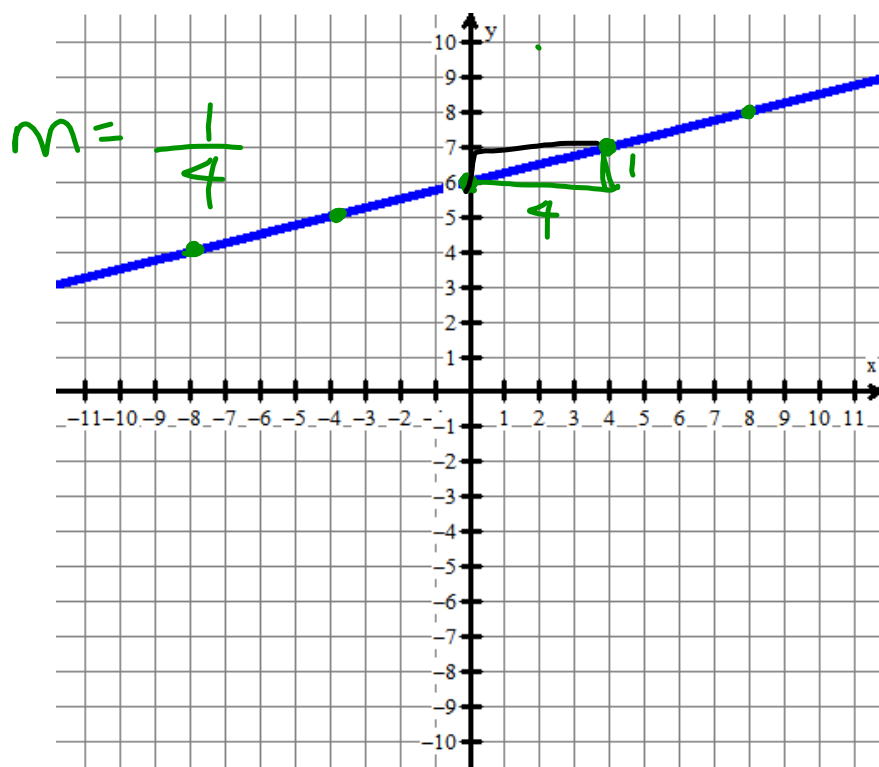
$$\frac{-6}{3} = -2$$

1 equation

$$y = mx + b$$

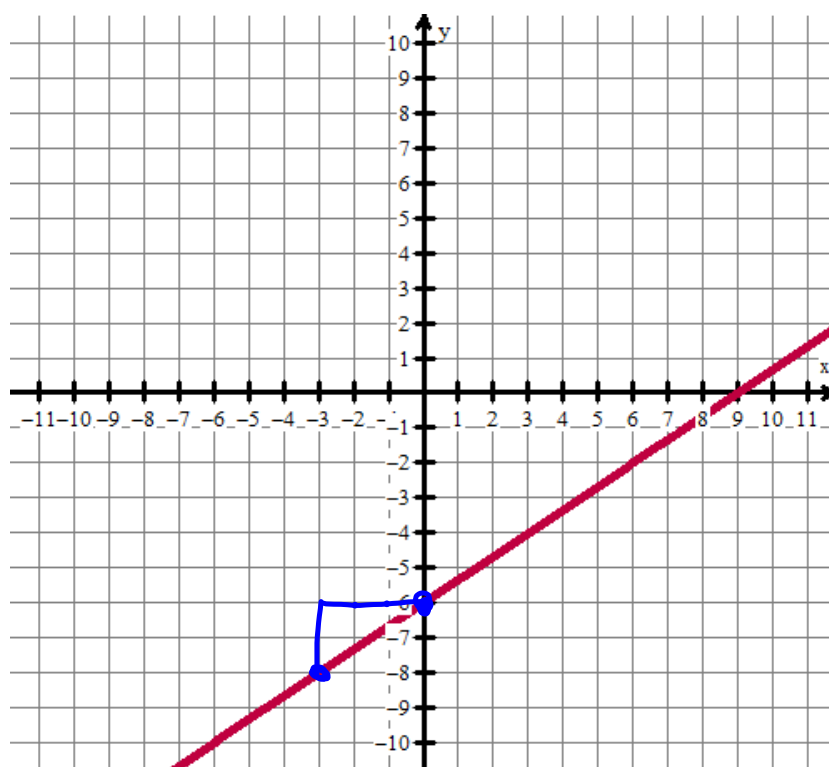
$$y = -2x + 5$$

ex. 2.



- ① Trouve b .
 - ② Trouve 2 points.
 - ③ compte pour trouver la pente
 - ④ écris l'équation:
- $y = mx + b$
- $b = 6$ $m = \frac{1}{4}$
- $y = \frac{1}{4}x + 6$
- $y = \frac{x}{4} + 6$

ex.3

 (x, y)

$$m = \frac{2}{3}$$

$$b = -6$$

$$y = \frac{2}{3}x - 6$$